

# Cutting bow VH 135

The wire attachments on the cutting bow VH 135 enables vertical 90 degree as well as 45 degree cuts. The vertical wire allows users to work with larger sized materials.



The cutting tool type L-G-S 135R with cutting bow VH 135.

**CRITERIA**

- ◆ For hot wire cutter model L-G-S 135R from 7/2011
- ◆ Anodized aluminum
- ◆ Strong corner connections with braces
- ◆ Includes three replacement wires
- ◆ Cutting height: 400 mm
- ◆ Cutting Width: 780 mm

**PRICES (excluding tax)**

- ◆ 159.90 Euro

**PRICES (incl. tax)**

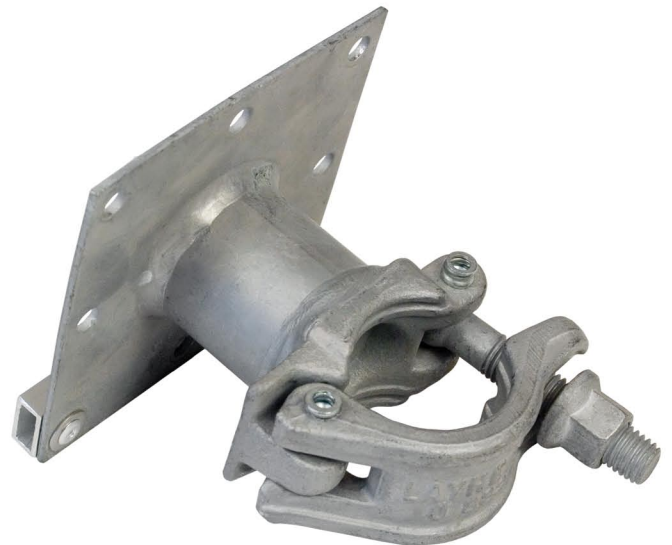
- ◆ 190.28 Euro

**ITEM NUMBER**

- ◆ Cutting bow VH135: 00SBVH135

# Scaffolding Attachment

Using this robust attachment piece, hot wire cutters are easily attached to scaffolding for worry free working.



The scaffolding mount is quickly attached to the cutting tools via three screws.

**CRITERIA**

- ◆ For all SCHIWA-foam-cutters with base plate from year 2011
- ◆ Worry free working
- ◆ Attaches in seconds via three screws
- ◆ Galvanized steel

**PRICES (excluding tax)**

- ◆ 69.90 Euro

**PRICES (incl. tax)**

- ◆ 83.18 Euro

**ITEM NUMBER**

- ◆ Scaffolding attachment: 00GH0049